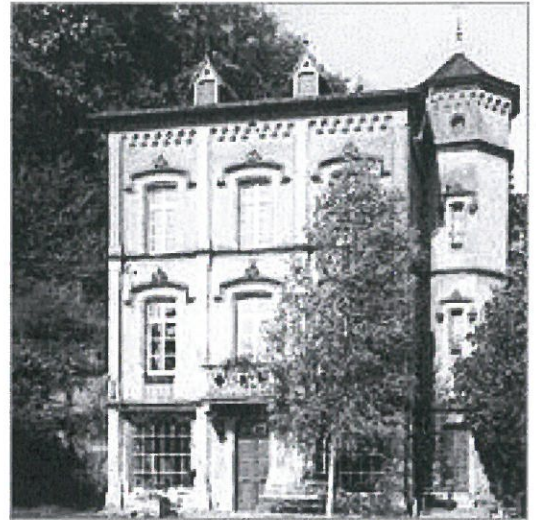


CERE, CDRR and CDREF now also part of the University

Alongside the CVCE, three smaller documentation centres were integrated into the University on 1 July by decision of the Government, namely the Centre d'Études et de Recherches Européennes (CERE) Robert Schuman, the Centre de Documentation et de Recherche sur la Résistance (CDRR) and the Centre de Documentation et de Recherche sur l'Enrôlement Forcé (CDREF). Read on to learn more about these other centres.

For most of us, the current integration of centres into the University as decided by the Government concerns the former CVCE. However, three other documentation centres are also affected by the Government's decision to pool research efforts in contemporary history. These centres were located at historical sites in Luxembourg City, one of which will remain part of the University: a complex of two buildings in Clausen including the house where Robert Schuman was born. The two other locations, the Villa Pauly and the former Hollerich railway station, will continue to be used by the Ministry of State as commemorative sites for WWII in Luxembourg.



Five staff members from these institutions will contribute to the new interdisciplinary centre as their activities bring added value to the priority areas of the IC, be it in supporting research and/or outreach. The other staff members have joined a new unit under the Ministry of State directed by Jean-Claude Müller, the "Service de la Mémoire", which will be responsible for commemoration activities for the victims of WWII.

All three centres are well known by UL researchers in related disciplines (especially historians) as very useful sources of documentation. Large parts of their libraries will be transferred to the UL and integrated as research libraries in the future IC. Technical discussions are currently being held as to where the various parts of this documentation should be located: the Archives Nationales, the Bibliothèque Nationale du Luxembourg and/or the University. For the time being, the books and other resources can still be consulted at their current location.